

The Linworth Link

Volume 18, Issue 6

June 2011

Linworth United Methodist Church

7070 Bent Tree Blvd.
Columbus, OH 43235
Phone:
614-336-8485
Fax:
614-336-8486
www.
linworthumc.org

From the Desk of Pastor Rae Lynn

Dear Linworth family and friends,
I write this article on the heels of our "Gifts Open Doors" banquet that we celebrated on Sunday, May 15. By the time you receive this, it will seem like old news. That evening we revealed our \$500,000 campaign goal to reduce our debt. Through early gifts (from the campaign team and others) we already have pledged \$234,618! We, as a congregation, can indeed come together and support the remaining \$266,000 and achieve our goal. Commitment cards need to be turned in by **June 1**, and soon thereafter we will begin our giving to the debt reduction on **July 1**. I am excited about becoming debt free! Currently we budget \$150,000 annually to mortgage payments. At our banquet, several questions were asked about the future of Linworth and how we might use this \$150,000. One person asked if we were looking at our space needs and reminded the church that at the previous location the building had a gymnasium. Were we considering such an option? Another person asked about how the extra income to our budget in the next few years might impact future programming and what we were thinking in regard to new ministries and programs. Both were good questions. Admittedly, the Team and I did not speak in concrete

terms regarding specific visions of either of these questions and/or options. To be candid and transparent with you, we do not have a mapped out "ministry action plan." The primary position of the campaign was to reduce the debt, not to envision how we would invest the dollars in the future. We wanted no hidden agendas. However, we are in beginning conversations with our Administrative Board and our Staff-Parish Relations Committee regarding the direction of ministry at Linworth. We want to be attentive to where God is leading Linworth UMC and you will be hearing the dialogue of some of these conversations. I deeply believe that God desires us to be faithful and prayerful concerning the direction that God will set for us over the next several years. As I have listened to this congregation, I have heard the following kinds of feelings and statements of belief. However, none of these is in any kind of definite planning stage.
We need to be out of debt in order to have income to care for the ongoing needs of our building, a building that now 15 years later is beginning to show wear. And that is true. Our Trustees have been proactive in developing a

timeline with projected costs of large expense items such as air conditioning units, new roof, parking lot renovation, cupola renovations, etc. etc. The church house needs some attention. We will face expensive issues in the near future. \$150,000 more a year for some of these costs will care for these needs. *We need to look to the future of our children and youth and build an addition, a family life/multi-purpose center.* Wouldn't it be wonderful to have more space for more activities, an area where feasting and fellowship could happen in a space different from our worship center? (Although, I loved dining with all of you in that sacred space.) Such additional space could be a place where we could hold contemporary worship and then even consider holding two worship services simultaneously. Two different spaces, with traditional in our

(continued on back page)

June Worship Schedule

5—7th Sunday of Easter Holy Communion

Mr. Chad Johns
8:45 a.m.—Traditional
10:15 a.m.—Contemporary
11:30 a.m.—Traditional
Graduate Recognition

12—Pentecost

Dr. Eugene Folden
8:45 a.m.—Traditional
10:15 a.m.—Contemporary
11:30 a.m.—Traditional
6:30 p.m. Healing Service

19—1st Sunday after Pentecost

Rev. Rae Lynn Schleif
8:45 a.m.—Traditional
10:15 a.m.—Contemporary
11:30 a.m.—Traditional

26—2nd Sunday after Pentecost

Rev. Rae Lynn Schleif
8:45 a.m.—Traditional
9:45 a.m. Brunch Bunch
10:15 a.m.—Contemporary
11:30 a.m.—Traditional



Adult Small Groups

Bridge Club: Contact: Byrdie Lorenz

Bridge Club will meet on **June 3** at 8:00 p.m. in members homes. Call Byrdie for information.

Building Nesters: Contacts: Shawn & Amy Brown

We will meet this month for Bible Study Lite, on **Thursday, June 2** off site at a local park for kids playtime and fellowship for the group. Social event for this month is tbd. Call a contact for details.

Closer Walk Class: Contact: Janet Blocher

The Closer Walk Class meets Sunday mornings at 9:00 a.m. in room 225. If you have decided to develop a "Closer Walk" with God, this class is for you! The Closer Walk Class also undertakes service projects and has fellowship opportunities throughout the year. We are currently reading Love Wins. Check us out! We'd love to have you.

Dining Disciples: Contacts: Marlene Goodenow/Karen Stahle/Sally Moser

For fun and fellowship, join Dining Disciples. Groups of singles and married couples meet in homes or restaurants for a meal about 4 times a year. What a great way to get to know each other. There's still time to sign-up for 2011. Call a contact.

Hand and Foot Card Club:

Contact: Jean Balsler
Join us in the Fellowship Hall on **Friday, June 3** at 7:00 p.m. Bring a snack to share. The group usually meets the first Friday of each month.

IMPACT Service Group: Contact: Becki Hollenbaugh

IMPACT is a service group that meets with residents at Claremont Retirement Village. Join them on

Wednesdays, June 8 & 22 at 7:30 p.m.

Keen Adult Bible Study: Contact: Bob Jacobson

Join them in the Fellowship Hall (room 136) at 10:00 a.m. on Sunday mornings.

LinWomen Online: Contact: Sharon Valade

This is an online group for women to chat, encourage, and share spiritual concerns with other busy women. You can write as much as you want, respond to others, give new information, and share joys and concerns.

Linworth Campers:

Contacts: Ian & Jean Davidson
Camping dates are:

June 17-19 at Deer Creek State Park. Hosts are Warren & Marlene Goodenow. **July 1- 4 at Sauder Village in Archbald, OH.** Hosts are Andy & Karen Ahijevych. For information regarding the camping season please contact Ian & Jean Davidson.

Men's Before-Work Spiritual Sharing Group:

Contact: Mike Smeltzer
The Men's Breakfast Group meets on the 2nd and 4th Tuesday mornings at First Watch Restaurant at 7:00 a.m. See you on **June 14 & 28.**

Mom's Study: Contact: Terese Loudner

Join our Mom's Study as we continue studying the book Knowing God: Making God the Main Thing in My Life. **Thursdays, June 9 & 23** at 6:30 p.m. Everyone is welcome. Questions? Contact Terese. Childcare is available.

MOPS (Mothers Of

PreSchoolers): (A Christian group for mothers with children ages birth through kindergarten) Contacts: Diane Hamilton & Melissa Hufft
Join us in September when we start up again.

Peace in the House: Contact: Shelley Burton

This group supports you finding and maintaining peace with yourself, peace with God, and peace with others. Group normally meets on the 1st and 3rd Wednesdays at 6:30 p.m. in the Library. The group is taking a break over the summer months. Check the September calendar for fall start up meeting dates.

Searchers: Contact: Doug Stahle
Meets in the Fellowship Hall (room 138) at 10:00 a.m. on Sunday mornings for thought provoking and stimulating discussion on a number of religious issues.

Shawl Ministry: Contacts: Marilyn Pohlman & Jean Davidson
More than 230 shawls already have been presented to those in pain. You don't have to knit to be involved. Call a contact to get connected.

Stephen Ministry: Contact: Sandy Apicella

We meet the 1st and 3rd Tuesdays. May meetings are **June 7 & 21** at 7:00 p.m. in the Library and room 225.

Thursday Morning Bible Study:

Contact: Lea Elshoff
The Thursday morning Bible Study continues to meet each week at 10:00 a.m. in room 210. Please feel free to join us — even for a visit!

Women's Bible Study: Contact: Jeanne Byers

Come, join us Sunday mornings at 10:00 in room 210 to grow spiritually with other women.

Note: Please call ahead regarding meeting dates and times, some groups are taking breaks over the summer months.

If you need a phone number or email for a contact person for an event or group, please contact the church office (336-8485).



Children's News

Alisha Meacham
(ameacham@linworthumc.org)
Director of Children's
Ministries, LUMC

VBS 2011 Registration has

begun. Just a reminder that we will be having two day sessions: Preschool Session, 9-11:30 a.m. and Elementary Session, 1-4 p.m. the week of **July 18-22**. If you are interested in an evening VBS program, you may attend VBS at Bethel UMC. Their evening only program runs **June 27-July 1**, from 6:30-8:45 p.m. You may pick up LUMC registration forms from the display table in the Lobby, LUMC or LCC offices, or download from the church website. Bethel UMC VBS registration will also be available at LUMC or from their website at: www.mybethel.org.

Volunteer Help Needed in Toddler/Two Room on Sunday Morning

Our class is growing! Extra help is needed in this room on the first, second and fifth Sundays of each month. If you would like to help, contact Alisha Meacham.

Membership Care News

"Dear Linworth,

It's been quite a year. It seems like only yesterday that I was the new guy, desperately trying to remember people's names, to learn what groups did what, and to discern the ebb and flow of this particular church family. Now, four "Exploring Linworth" classes, two garage sales, and one Disciple class later—not to mention many conversations and "good morning" handshakes — we find ourselves parting. I don't know where our paths will lead us, but I do know a couple of things. I know that God is

calling you to great things beyond your imaginations. Don't be afraid to follow. I know that there is always room to go deeper in faith and deeper in love. You have the capacity for both. Embrace the challenge that both of those bring.

My thought and prayers will be with you as this transition happens. Though change can bring both opportunity and frustration. I hope you will welcome Pastor Brian when he steps in to provide leadership to the membership care and small group ministries in the same spirit that you welcomed me. It has been an honor to serve with you this year. May God be with you as you walk the road before you, now and always.

Your friend and brother in Christ,
Chad Johns"

"Dear Linworth,

For those that may have missed the announcement made on May 1, I share with you news regarding a staff change. Our District Superintendent, Rev. Marcus Atha, approached Pastor Rae Lynn regarding our willingness to consider an appointment of a part-time ordained clergy member to Linworth. The person Rev. Atha had in mind has experience and gifts in the ministry of assimilating guests and new persons who come through our door. A decision was made to have him meet with our Staff Parish Relations Committee (SPRC). After being introduced to Rev. Brian Gath the SPRC agreed that he indeed has the particular gifts needed for the ministries of hospitality, assimilation, and small group development.

Rev. Brian Gath will begin his appointment at LUMC beginning July 1. A graduate of the Ohio State University, Brian earned a degree in mechanical engineering and was called to the ministry while manufacturing ceiling tiles. Rev. Brian attended seminary at Drew University in New Jersey, and moved back to Ohio to be closer to

family following graduation. For the past six years he has served at Indian Run UMC. Married with two children, Jacob—3, and Lucy—10 months, Brian is both anxious and excited about his appointment to Linworth. Brian will focus his service in assimilating guests that discover Linworth, developing small groups as we grow in our spirituality and helping Linworth serve the community as an inviting church.

Currently, Mr. Chad Johns has been working in this ministry, along with his position as a part-time chaplain at Ohio Wesleyan University. Chad's greatest gifts include teaching and helping people develop spiritually. He has been a wonderful teacher and a gracious team player. Chad will be focusing his attention back at Ohio Wesleyan, as well as looking for other employment. We want to wish Chad well, and we will of course, assist him in every way we can to be in the kind of ministry where he is using his gifts and passion. Chad will be preaching on June 5, and will conclude his time with us on June 14.

I hope that each of us can show our gratitude to Chad for blessing us with his gifts and service. In addition, I hope all of us will welcome Rev. Brian to Linworth when he begins his appointment.

In Christ,
Gabe Meister
Staff Parish Relations Committee
Chairperson"

Youth News

Seth Rowe
(srowe@linworthumc.org)
Director of Youth Ministries

Summer is here and our schedule is changing. Check out the youth website:

(<http://lumcym.blogspot.com/>)
for details on upcoming events.



Linworth Children's Center

www.linworthcc.org

Spots still available in...

- ⇒ Full Day Kindergarten
- ⇒ Full Day Program
- ⇒ Part Day Program

Call 614.336.9559 for a tour or more information.

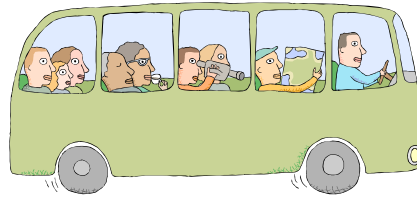
Remember with summer here, LCC Summer Camps will begin soon. Watch for children playing on the playgrounds. Keep in mind that the barriers may be set up for the safety of the children. Have a safe summer!

Safety Fact of the Month

Do you know what evacuation route to take from your classroom? Worship Center? Take a moment to look at the posted fire escape routes that have been posted in the facility near the doors. A moment now, can save a life later!

The following note was received:

"Dear Friends,
 Many of you know that my mom has plateaued for six years in a stage of anxious bi-polarism during her struggle with dementia. Although her memories and world have become small, Mom understands and appreciates cards and letters. She turns ninety on June 7 and our family would like to shower Mom with greetings. If you would like to send her a card, the address is: Berda Firestone, Resident, Mother of Angeline McCrory Manor 2W, 5199 East Broad St., Columbus, OH 43213.
 Jan Nelson."



Linworthys News (the 55 and over group) Contact: Doug Stahle

ALL ABOARD--BUS TRIP!!
TUESDAY, JUNE 28

COST \$40.00--Make checks payable to: Linworthys, send to George Bilderback. (No refunds after June 20.)

We leave LUMC parking lot at 8:30 a.m. At 9:10 a.m. we'll visit the home of Howard and Susan Dean's that was originally a church. At 11:00 a.m. we travel on to Martinsburg to the home of Ada Mullet. At 12:00 p.m. we enjoy an Amish home cooked meal served in an adjacent building of their farmhouse. The menu is: a choice of chicken, roast beef or ham with mashed potatoes, noodles, vegetable, salad, pie and iced tea. At 1:15 p.m. we're off to Utica. 1:30 p.m. we gather for a tour of the Velvet Ice Cream Company and an ice cream treat. We leave Utica at 3:30 p.m. and arrive at LUMC at 4:30 p.m. Call Donna Hughes or Pat Burkey to sign up for the trip. Another exciting day with your fellow LINWORTHYS!

Coming up in **July**--our BINGO Bash.



Membership News:

Births: • Lucille Ruth Holloway, daughter of Kurt & Megan Holloway, granddaughter of Karl & Linda Holloway;
 • Maddox (Max) Brant Del Regno, son of Mike & Maria Del Regno, sister of Brady and Josie;
 • Vera Yu Jacobson, daughter of Andy & Karen Jacobson, sister of Dexter, granddaughter of Bob & Mary Lynn Jacobson.



Get Involved with Social Concerns

Social Concerns
Contact: Esther Hunter

⇒ The Open Shelter Meal will be prepared beginning at 8:00 a.m. on **Tuesday, June 14** in the church kitchen. If you can help contact Roy & Arlean Sudhoff.

⇒ The Rebecca's House meal will be prepared at 11:00 a.m. on **Tuesday, June 14**, in the church kitchen. Call Roy & Arlean Sudhoff if you need information. If you would like to help serve the meal, contact Celeste Thomas.

⇒ The next Red Cross Blood Drive will be on **Saturday, June 11**. Please sign up to save a life!

⇒ The next Brunch Bunch will be **Sunday, June 26**. Come and join us for the food, fellowship and fun from 9:45 a.m. to 1:30 p.m. Remember to meet a new friend!



Contact:
Angela Pucher
linworthfusion@gmail.com

A Group for Young Adults

(students, young working adults,
young marrieds, and singles)

We are a community of Young Adults encouraging one another to grow in our relationship with Jesus Christ, living out our faith by serving others with the love of Jesus Christ. We gather each Thursday at 7:00 p.m. at Linworth.

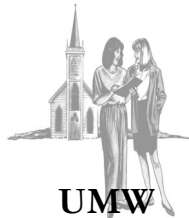


Stephen Ministers Are There to Care

Are you going through a difficult time--emotionally, spiritually, or relationally? Are you lonely, experiencing a crisis, or simply stressed by everyday life? You don't have to suffer alone. Our Stephen Ministers are trained caregivers, ready to listen, care for and encourage you, pray with and for you, and provide confidential one-to-one Christian care to help you through whatever it is that you are facing. To find out more, talk with Sandy Apicella, Janet Enck, Cheryn Houston or Pastor Rae Lynn.

New Building Hours

Please note that the building will be locking doors at 8:00 p.m. Monday—Friday, and will only be unlocked from 9:30 a.m.—12:00 p.m. on Saturday. Please adjust your schedule accordingly.



UMW Women's Ministries

Contacts: Linda Higgins & Sue Bowen
No meeting in June

Fellowship Day Circle

Contacts: Nancy Zimmerman & Mary Lynn Jacobson
No meeting in June

MOPS

Contacts: Diane Hamilton & Melissa Hufft
We'll not meet until September.

Linwomen Online

Contacts: Sharon Valade & Karen Wood

This is an online group for women to chat, encourage, and share spiritual concerns with other busy women. You can write as much as you want, respond to others, give new information, and share joys and concerns.

Service Circle

Contact: Lea Elshoff
Sandwich making in the Church Kitchen for Faith Mission. Join us on **June 24** at 9:30 a.m. in the Kitchen.

MISSION PROJECT HELP

During the month of June we are collecting plastic utensils, paper plates and bowls for New Life UMC. Our collection of used postage stamps, Campbell's Soup labels, used reading glasses, and pop can tabs is continuous! Please place all of these items in the UMW—Club 56 cupboard opposite the church office, or they may be brought to any Circle or Board meeting.

Thank you for your ongoing support.

Mission Board Meeting

Contact: Sue Gabel
First Monday of every month. No meeting in June.
Next meeting is **July 11** at 7:00 p.m.

Evening Circle



Garage Sale Thank You

Thanks volunteers for working so hard at the Garage Sale. Together, youth and adult, there were 231 volunteers, who worked 2,270 hours. There were 204 times some of us did not sign out, so we would have had more hours recorded. Job well done once again! Until fall, thank you again.

Circle of Caring Cares

Did you know your Community Ministries apportionment giving helps frail, elderly and disabled people remain in their homes? Martha Buller, Director of Circle of Caring in Pickaway County writes, "We finished our first ramp this spring at the mobile home of an 84 year old woman. 7 volunteers were able to see it through from start to finish in one day." Circle of Caring is truly Faith in Action! For more info about the many ways Circle of Caring helps people in need, contact Martha Buller at marthabuller@bergerhealth.com.

Want To Help Spring Storm Victims? Here's how.

You can give to the United Methodist Committee on Relief (UMCOR) through Linworth for assistance to all of those suffering from the devastation of tornadoes and floods. UMCOR funds are very low due to all the devastation around the globe and in the states. 100% of every dollar goes directly to relief, and none of it goes toward administrative costs. Make your check payable to LUMC, mark "UMCOR" on the memo line. The Advance Special number is 3021326.



The Heart of Healing Prayer Service

Do you try to reach "perfection" yet constantly fall short? Life is filled

with imperfection: imperfect health, imperfect relationships, imperfect children, imperfect spouses. But how can we answer God's call to live fully and wholly? Linworth's second Healing Prayer Service will focus on these questions and more. The service, dealing with the Spirituality of Imperfection, will be held on **Sunday, June 12 at 6:30 p.m.**

The first Healing Prayer Service provided a welcome and meaningful time for those who attended to focus on healing in all its various forms. The healing prayer services will be offered quarterly.

At the June service, come and see how the very things that cause our imperfections can be used in God's way and in God's time for His purpose. Come. Be healed. See how God can receive your imperfections and mold them and shape them to His purpose.

Pastors' Hospital Visitation Schedules

Pastor Rae Lynn Schleif:

Tuesday, Thursday, Saturday

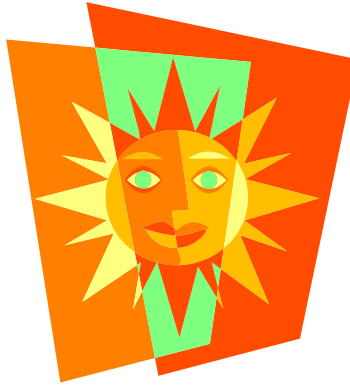
Pastor Gene Folden:

Monday, Wednesday, Friday

Pastor Jeffery Dunn:

Sunday

As always, contact the church office (336-8485) with any pastoral needs.



June/July Events

June 1—Debt Reduction Pledges due

June 5—Graduate Recognition

June 5-9—Annual Conference at Lakeside

June 11—Red Cross Blood Drive

June 12—Heart of Healing Service

June 19—Happy Father's Day

June 26—Brunch Bunch

June 28—Administrative Council Meeting

July 4—Building Closed

July 11-15—Youth Mission Trip

July 18—22—Vacation Bible School, PandaMania

July 24—Brunch Bunch

July 26—Administrative Council Meeting



125 Years Linworth UMC Honoring the Past Celebrating the Present Shaping the Future 1887-2012

Save the following dates for Linworth's Anniversary Celebrations!

⇒ **March 4, 2012:** Church Potluck & Play (LUMC Beginnings)

⇒ **June 17, 2012:** Outdoor Worship and Picnic (1800's style!)

⇒ **September 16, 2012:** "Homecoming" Worship Service @ all 3 services





Updates for June

Easter Offering

This year's Easter Offering goes to *Grace Children's Hospital* in Haiti and *Habitat for Humanity*. Grace Children's Hospital, founded in 1967, is the flagship ministry of International Child Care. Grace Children's Hospital is recognized as Haiti's leading medical facility dedicated to the treatment of children with tuberculosis (TB). Each year, the hospital receives thousands of children who are suffering from TB, HIV and other diseases.

The Linworth UMC Habitat for Humanity Team works with a consortium of churches organized through the Hilliard United Methodist Church. This group builds homes in Columbus and storm damaged parts of the U.S., most recently in Mississippi. The generosity of the Linworth Congregation gave \$4,837.71 to these and other projects.

New Life Dinner

On the Sunday of the Memorial Day Weekend the Women's Bible Study and other volunteers provided meals for individuals at the New Life Church. This is a busy weekend when volunteers are scarce. This group stepped in to assure that the people served by New Life received a hot meal. The hot dogs, baked beans, potato salad, dessert, coffee and lemonade provided a meal to 100 who showed up and another 100 who gathered carryout meals. Thanks to these volunteers who stepped forward on this difficult volunteer time slot to fill. People go hungry every day whether it's convenient for us or not.

Food Pantries in the Land of Milk and Honey

In our neighborhoods we seldom think of the hunger lurking next

door. Linworth Missions supports two Food Banks in Northern Franklin County—The Worthington Food Pantry and Near Northside Emergency Material Assistance Program (NNEMAP).

NNEMAP, established in 1969, has become one of the largest food pantries in Franklin County. NNEMAP's clientele consists of families living in or near poverty. NNEMAP is a cooperative ministry of over 30 churches distributing food and material assistance to needy residents. In 2010, with over 100 volunteers it served over 8,000 families with over 18,000 family members an increase of 10% over 2009.

The Worthington Food Pantry is a volunteer community based organization driven by compassion for others and the belief that we are all one body serving God by serving individuals and families in need. It distributes food and personal items to individuals or families in need in the Worthington area. In the last year, the pantry served 1,807 families with over 5,468 family members.

Turning Old Newspapers into Treasure

Please recycle your newspapers and magazines with the Linworth recycling program. Don't give away your paper to the trash collector. Give it to Linworth and make money for missions. In the month of March we recycled over 5 tons of paper. This effort generated \$75 for mission projects and reduced our landfill by nearly 16 cubic yards. The green and yellow bins are located on the north edge of the parking lot.

Making Progress Linking Laos and Linworth

We have managed to send money to Laos to begin our mission efforts there. We have sent \$1500 allocated by the Mission Committee

to assist in the construction of stairs from the Mekong River up to the village on the bluff overlooking the river. This partnership means the local congregation organizes the labor to build the stairs. Their labor constructs the forms for the stairs and mixes and pours the concrete. Our funds purchase concrete and lumber. Hopefully in October we will be able to climb those stairs and celebrate with the congregation.

We were able to leverage another \$1500 from the Mission Committee to make a \$5000 down payment on the creation of the vocational school. The leverage went like this: we added \$1000 of the funds collected at the services where missionary Rev. Dr. Romeo del Rosario spoke. So we sent \$2500 to the General Board of Global Ministries on the condition that it be matched. The General Board matched it with an additional \$2500. So \$5000 was enough to begin the vocational school application process.

We are developing a partnership with GBGM, West Ohio Conference and other churches in the U.S. to support the development of the vocational center. The total cost will be \$100,000 over the next 2 years. Pastor Rae Lynn is working closely with GBGM and the Conference to move this effort in a positive direction.

We are still looking for volunteers to go on the October Mission Trip to Laos. This will be a rare opportunity to work on a project and visit with congregations that we are supporting, and begin to understand the culture of Laos. We still need 4 more to make a team of 8. The projected dates are **October 13-26, 2011**. Call Joel Rabb for trip details.



Linworth United Methodist Church

7070 Bent Tree Blvd.

Columbus, Ohio 43235

Creating Community, Growing in Christ, Serving the World

**Easter Sunday
Morning Worship
Opportunities**

8:45 Traditional

10:15 Contemporary

11:30 Traditional

(continued from page one)

current sanctuary and contemporary in a "gymnasium" would bring more persons into relationship with Jesus Christ at optimal worship times! Again, \$150,000 would be a beginning for such a vision, yet much more would be required.

We need to consider programming new ministries so as to reach our neighbors, reach those who are in need and those who need us to go to them with a gracious word from God. That is always true of every congregation! What is the next outreach, the next mission, the next new ministry launched at Linworth, or the next new style of worship to draw and connect persons to God and

Christ? This is our sole reason for existence anyway, is it not, to bring people into relationship with God and Christ?

We need to consider making a few of our current staff full time, and/or adding a full time associate minister. Again, another conversation regarding faithfulness, staffing for ministry, staffing for excellence as we honor God and be a congregation in the world that makes the world a different, more God-honoring place to live and raise families.

These are only a few of the conversations that I hear or have participated in regarding what now and what next for Linworth UMC. We cannot do them all at once, and \$150,000 will do a

lot, but not everything mentioned above! I am thankful that the questions were asked at the banquet. We will be listening to God and listening to how God is moving within Linworth. This congregation will be a part of the ongoing dialogue. But for today, all our gifts open doors, many kinds of gifts and many kinds of doors. May we reduce this debt greatly these next three years, and be rid of it within the next six. We will let you know the total amount committed mid-June. Until then, may we all be a part of the solution to God's work in this world!

In ministry with you,

Rae Lynn